

**Y-Cabled Docking Station
CSV-3203**



Introduction

Y-cable docking station utilises existing limited one USB 3.0 port and one mini DP output port on desktop or laptop through a Y-cable and a interface box to increase the number of USB3.0/mini DP port and add one GbE port for fitting the user applications, communication and interface demands of surrounding accessories.

DisplayPort supports MST format up to eight audio-video streams, which can be further routed on either of the two outputs in any combination of eight streams.

Y-cable docking station can also replicate the incoming video streams on both output ports simultaneously, thus allowing cloning on two downstream sinks. For example, a 4K2K 60 Hz video input is replicated on two output ports simultaneously.

Y-cable docking station features the HDCP 1.3 content protection scheme with embedded keys for secure transmission of protected audio-video content. It also operates as an HDCP repeater for the downstream sinks. When the downstream sink is disconnected, Y-cable docking station automatically turns off the inactive port for power saving purposes.



Features

Display Features

- **Interface**

One mini DP input cable (DP 1.2a compliant)
Two mini DP output ports (DP 1.2a compliant)

- **Bandwidth**

Video resolution up to 4K x 2K
Audio 7.1 Ch up to 192 kHz sample rate

- **Deep color support**

RGB/YCC (4:4:4) – 16-bit color
YCC (4:2:2/4:2:0) – 16-bit color

USB Interface

- One USB 3.0 input cable (Backward compatible to USB 2.0 and USB 1.1)
- Three USB 3.0 output ports (Backward compatible to USB 2.0 and USB 1.1)
- Supports Charging Downstream Port (CDP) applications

Ethernet Feature

- One Gigabit Ethernet port (10/100/1000Mbps)
- Support Wake-ON-LAN Technology
- Crossover detection and auto-correction

Applications Diagram



Supported Monitor Display Resolutions

Display Mode	DP 1.2 output port 1	DP 1.2 output port 2
Single	3840x2160@60Hz, 24bpp	Not Connected
Single	Not connected	3840x2160@60Hz, 24bpp
Dual	2560x1600@60Hz, 24bpp	2560x1600@60Hz, 24bpp

System requirements

Y-cable docking station requires the following:

Computer that supports DisplayPort 1.2 with multi-stream support*

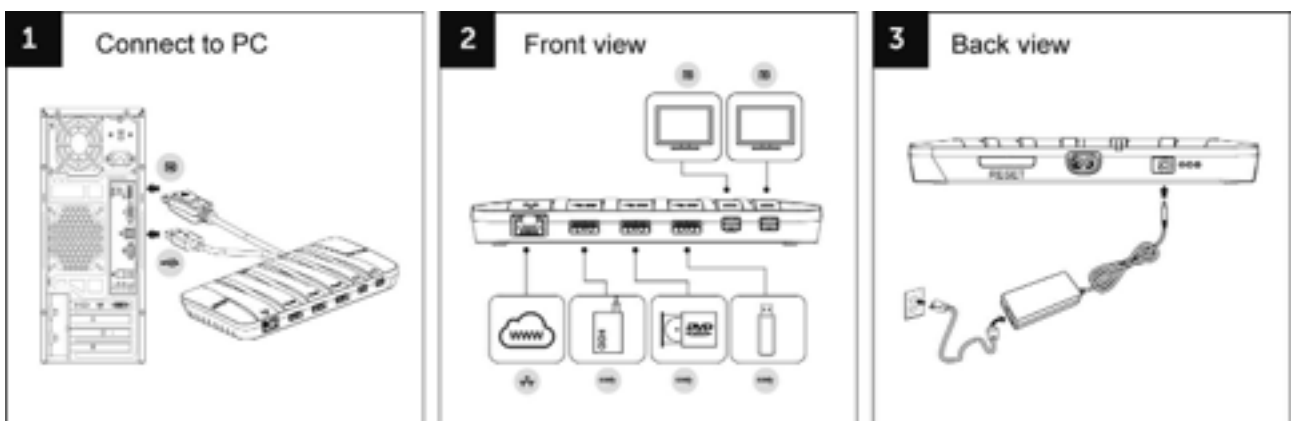
Microsoft Windows:

-Windows 7 SP1 (32-bit or 64-bit editions)

-Windows 8 (32-bit or 64-bit editions)

*Use of the DP Multi-Stream Hub with a computer that does not meet this specification is not supported.

Quick Start Guide



*The Reset key only use when the PC does not recognise the HUB device.

Troubleshooting

Here are the steps to solve possible problems.

Scenario: No video on any downstream monitor connected:

1. Check the LED to make sure Y-cable docking station has power. Use only the power adapter that was provided with Y-cable docking station.
2. Check that each downstream monitor is powered on.
3. Check the DisplayPort cable to be sure it is connected to the computer and Y-cable docking station
4. Check the computer or graphics card user manual to confirm that DisplayPort 1.2 and a multi-stream video signal are supported.
5. Check the Windows Display Control Panel to confirm that the downstream monitors attached to the hub have been detected and enabled.

Scenario: No video on one downstream monitors connected:

1. Y-cable docking station can support up to two monitors at 4K resolution.
2. Check the DisplayPort cable to be sure it is connected to Y-cable docking station and monitor.
3. If the monitor is a DVI or VGA monitor, check the DisplayPort cable to be sure it is connected to . Check the other end of the cable to make sure the DisplayPort-to-DVI or DisplayPort-to-VGA adapter is properly connected to the DisplayPort cable and to the monitor.
4. If the monitor is a DVI or VGA monitor and the cable and adapter are properly attached, test the monitor, cable, and adapter with another computer.
5. Check the computer or graphics card user manual to confirm the number of multi-stream video signals that are supported and the maximum resolution.
6. Check the Windows Display Control Panel to confirm that the downstream monitors attached to Y-cable docking station have all been detected and enabled.
7. Check the monitor with no video to confirm the DisplayPort input has been selected.

Scenario: Same image appears on all downstream ports:

1. Check the computer or graphics card user manual to confirm that DisplayPort 1.2 and multi-stream video signal are supported.
2. Check the Windows Display Control Panel to confirm that all downstream monitors are set for extended mode.
3. Update the video driver to the latest version available to enable the multi-stream functionality.

Regulatory information

Y-Cable Docking Station complies with the FCC/CE rules and abides by worldwide regulatory compliance, engineering, and environmental affairs.